

Chivers Barns in Haslingfield, South Cambridge is a development owned by Trumpington Estate. This vast project saw 4 brand new residential units of 2,3 and 4 bedroom smart living cottages built on a rural location, in open farming land. The project ran throughout the Covid-19 pandemic, which brought many challenges, but was ultimately delivered as promised and with minimal disruption to the end user client.



The Installer

DataworXs were chosen as IT consultants on behalf of CPS Building services, for the project on the back of their proven track record with completing projects on schedule and beyond expectations.

The Requirement

The objective of the project was to build 4 separate smart living cottages.

The client required internal cat6 infrastructure cabling to enable the integration and Management of the Building Management Control Systems via internet. In addition, each unit required multimedia plates to include Data, Voice and Digital TV throughout.

The Technology

Design and implementation of Digital Multi Media distribution, inclusive of Cat6 Copper Cable Media Cabinet, Coax internal and external cable.

External Cat6 copper cable run to the BT NTE.

Management of ground works in preparation for new BT and Digital TV Service.s

Each unit had 1 x Media Cabinet centrally located in the electrical and mechanical service, 1 x BT Broadband Socket, 12 Data points and 6 Digital TV modules

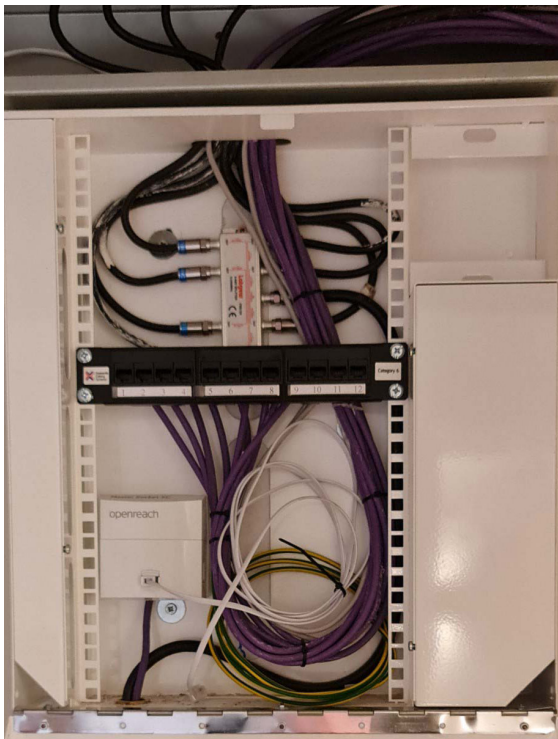
Netgear Network switching, Wireless Internet Router, Labgear Digital TV.


Challenges

In March 2020 the initial project meeting was undertaken onsite with CPS. 1 week later the UK entered into a national lockdown with the construction industry shut for 4-6 weeks.

Dataworxs and CPS took advice on the NHS Covid-19 Guidance and new RAMS were issued.

The cost and involvement of the implementation of safe working practices, using new PPE equipment plus the added safe distance of 2m working within closed environments made for a challenging time which then led to restricted and scheduled visits to site. Connectix account managers were able to work with DataworXs directly to ensure deliveries arrived at agreed times, to facilitate a smooth, safe handover. The project was completed in February 2021.



Project Scope Overview	
Customer:	Chivers Barns
Installer:	DataworXs  <i>Connecting Your Business</i>
Site Location:	Haslingfield, South Cambs
Requirements:	Barn Conversion
Equipment:	<ul style="list-style-type: none"> • 2000m Cat6 LSZH Cable • Cat 6 modules and faceplates • 9u Home media cabinet • 12 way patch panel • BT Broadband sockets • 500m CW1308 4pr telephone cable • BT Secondary euroline jack • 1000m coax cable and Euro TV Modules
No of Outlets:	Each unit had 1 x Media Cabinet centrally located in the electrical and mechanical service, 1 x BT Broadband Socket, 12 Data points and 6 Digital TV modules
Why Connectix:	<ul style="list-style-type: none"> • Breadth of product range • Proven quality of products • Level of support available from Account Management Team • Ability to deal with tight deadlines • Excellent working relationship with DataworXs

“The Connectix product was by far the best fit solution for the Chivers Barns project, with the added benefit of having daily direct contact with Carl our account manager which allowed DataworXs to design and deliver a cost-effective project on time.”

Stephen Moore, Project Director, DataworXs



